

ANTHURIUM

NANO
TECHNOLOGY
IN EVERY
CORNER



Call Us For Best Rate: 8748 90 91 92



ANTHURIUM
Aspire higher work culture

A PERFECT BLEND OF WORKSPACE AND TECHNOLOGY

Perks of being a part of **ANTHURIUM**

- Connectivity
- Revolution
- Leisure
- Roof top restaurants
- Orchestra pit
- Opportunity
- Technology driven
- Sustainability
- Geomancy concept landscaping
- Cascade fountains
- Inspiration
- Capital appreciation
- Virtual office
- Green plaza



Call Us For Best Rate: 8748 90 91 92



ARTIFICIAL INTELLIGENCE
READY OFFICES

Call Us For Best Rate: 8748 90 91 92

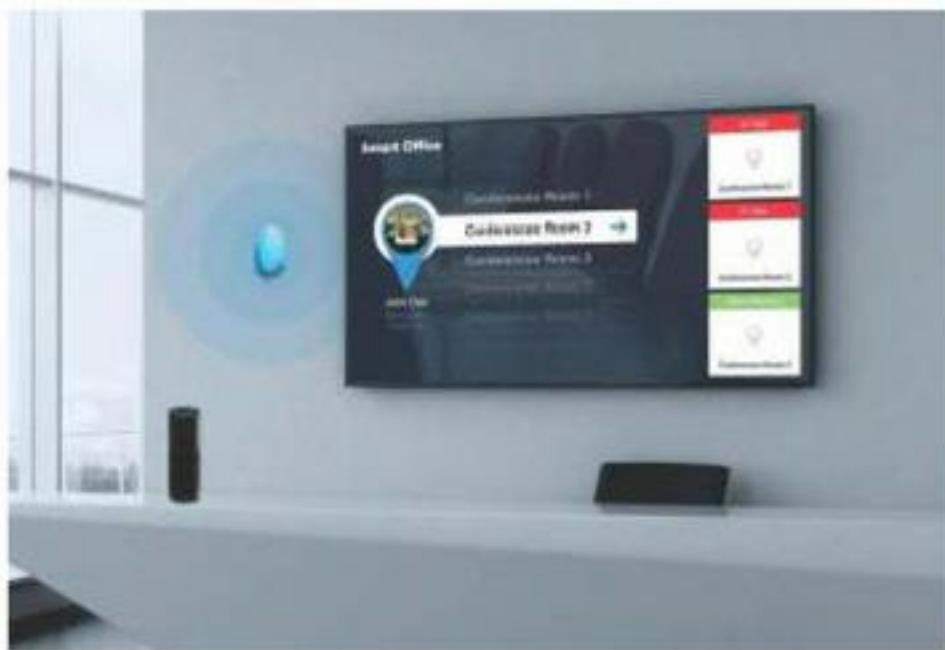


Call Us For Best Rate: 8748 90 91 92

MAKING OF A AUTOMATED TOMORROW

Future ready offices are designed to
suit multiple innovative ideas consists of

- Artificial intelligence
- Business centre
- Convention centre
- Virtual offices



Call Us For Best Rate: 8748 90 91 92



Call Us For Best Rate: 8748 90 91 92

ANTHURIUM

BIONIC BIOCLIMATIC ARCHITECTURE

A green gallery that balances the environment within the building while working with the natural forces. The architecture concerns itself with the climate as a major contextual generator and is designed with benign environment using minimal energy.

Rich resources have been chosen to make the project more efficient. It is an immaculate example of Bioclimatic architecture that balance the environment within the building. It has illumination, vertical gardens, efficient movement pattern implemented in the right perspective as per user's requirement.

-Strengthen quality with technology



Call Us For Best Rate: 8748 90 91 92

A FUNTASTIC BUSINESS PLEASURE



SIP

Premium retail shops
Hassle-free access to common area



SHOP

An undivided social sector
Magnificent atrium and premium brands



WORK

High tech offices
World class interior

Call Us For Best Rate: 8748 90 91 92



ANTHURIUM
Brew a medley of work & leisure

UPGRADE YOUR TRADE



Branding and signage opportunities

Ideally suited for workaholics

Excellent location; connects you with Noida and Greater Noida

Call Us For Best Rate: 8748 90 91 92



ANTHURIUM

PLATINUM RATED
GREEN BUILDING
WITH BEE AND GRIHA

Call Us For Best Rate: 8748 90 91 92

STATE OF ART SECURITY SYSTEMS



SECURITY

Hi-tech security system
with level-5 BMS

SAFETY

Your safety is our priority

Welcome to the most secure and safest
business district of India where your safety is
our primary concern.

100% friendly complex as per IHA's standard
with the best surveillance and CCTV system.
Fourth generation system as per NFPA & NBC.

Call Us For Best Rate: 8748 90 91 92



WE VALUE YOUR TRUST

After successfully delivering, the promoters of itum and Corenthum are coming with their new project ANTHURIUM, the future of IT parks for those who have passion for excellence.

24x7 Hi-tech offices with facility matrix with Artificial intelligence, modular coordinated convention centre. It is not a mere business centre but mindscaping at its best.

Call Us For Best Rate: 8748 90 91 92



AIR +ve



WATER +ve

FACILITY MANAGEMENT

Premium MEP (round the year)



Engineering Intelligence

The Design complexity in building controls hub of level V automation. Varied sophisticated electronic systems, hardware and software platforms have been integrated with a high level of competence.

HVAC System

IAQ addressing safety health & comfort on 24x7 concept with VFD's, Ground cooling techniques. A proper ventilation & humidity controls management. Refrigerant selection with lowest ODP.

Fire Detection & Mitigation Systems

Fourth generation systems as per NFPA & NBC guidelines

Safety Parameters

As per IHAs standards, 100% friendly complex with state of art surveillance & CCTV systems. Minimum travel distances for ingress & egress facility as per security standard.

PLEC

PLEC system with 100% power back up as per EHS compatible, an auto/manual synchronization with PLC. Proper Lighting system as per IES.

ECMES

LEED certified; Energy conservation parameters & double insulated glass, cool roof systems.

Facade

High performance glass used in curtain wall glazing.

Communication & Networking

MUX facility on fiber optic IT enabled pre activated broad band & Wi-Fi connectivity.

Material Advocation

The ANTHURIUM material advocation is as per UL certification, ASTM / DIN / EN / ISO standards. The building conforms to ISO 14001-2004 EM Systems.

Call Us For Best Rate: 8748 90 91 92



EU
USGBC
ASTM
UL
BS
DIN

WORLD CLASS SPECIFICATIONS

Structure	Earthquake proof RCC framed structure with infill foam concrete blocks.
External	High performance curtain walls. Al-pro panels in pleasing shades. All column exteriors in granite in Ground floor and first floor.
Flooring	Italian marble/granite in common areas and vestibule side. Granite/imported tile flooring in toilets and pantry areas.
Common Areas	Lift lobbies shall have architectural modeling in Granite, glass and SS304 stainless steel. State-of-art building automation systems provided in common areas.
Electrical	Copper electrics as per ASEE international standard on 24x7 redundancy concept. Single point bus bar tapping point for lobes. Common areas shall have modular switches, Philips/equivalent floor lights and ceiling lighting systems.
Water supply	Water pipe system in stainless steel with round the clock water supply in the complex.
Plumbing	State of art plumbing system with UPVC in drainage & CI in double stack fully ventilated systems.
Toilets	Automatic RO-BO (AOS) systems in expert cybernation.

Call Us For Best Rate: 8748 90 91 92



ANTHURIUM
Where fitness and peace co-exist

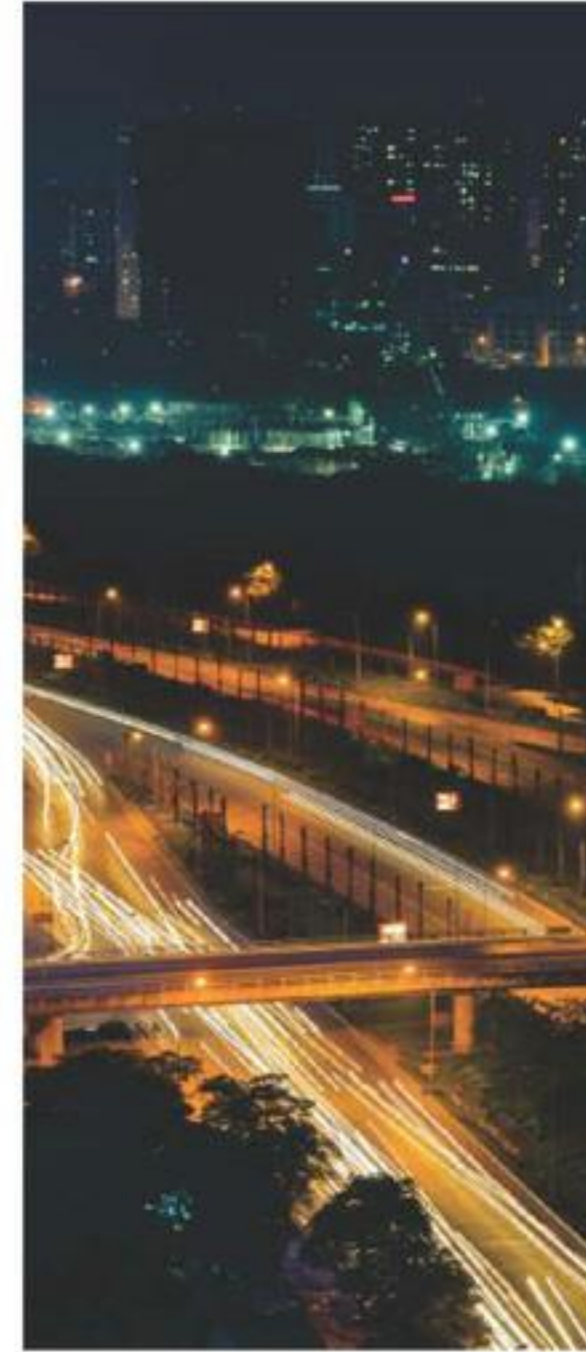
A TOAST TO WORK-LIFE HARMONY

Rejuvenate yourself with health club, yoga, fitness and spa centers.

BRING OUT THE
BEST OF TOMORROW



Call Us For Best Rate: 8748 90 91 92



1 ECO- FRIENDLY ENVIRONS

2 A PARAMOUNT FOR IT PARKS

3 METRO CONNECTIVITY

4 EASY ACCESS TO AIRPORT

5 EFFECTIVE ROAD CONNECTIVITY

Anthurium is abutting a green belt with geomancy concept landscape in the right zen concept.

A revolutionary concept where frontiers of technology meet the right facility matrix for redefining the meaning of work.

A slew of economical power on Important transport NODE with easy access to MRT.

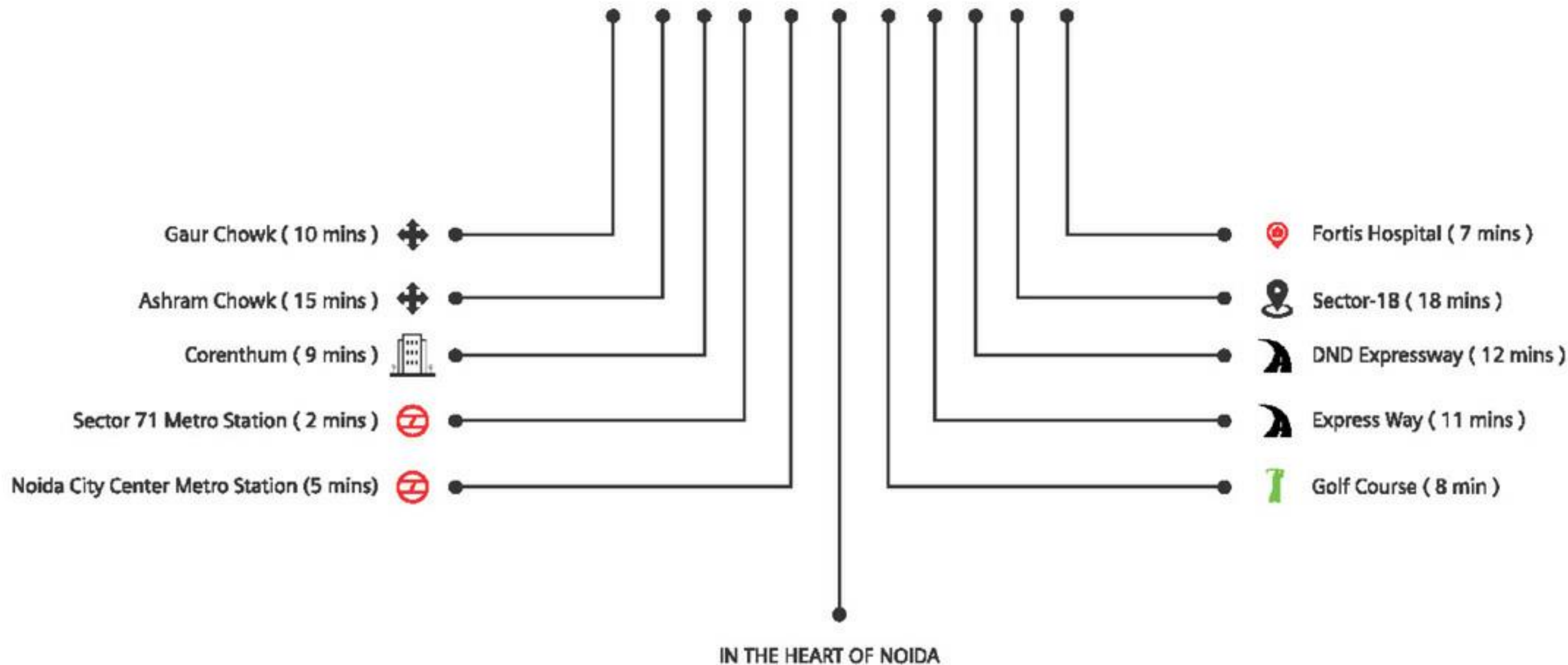
Expand your business globally. Airport is just a few miles away from your work centre.

Your growth is our mission; effective connectivity and activity pattern shall lead to your destination.

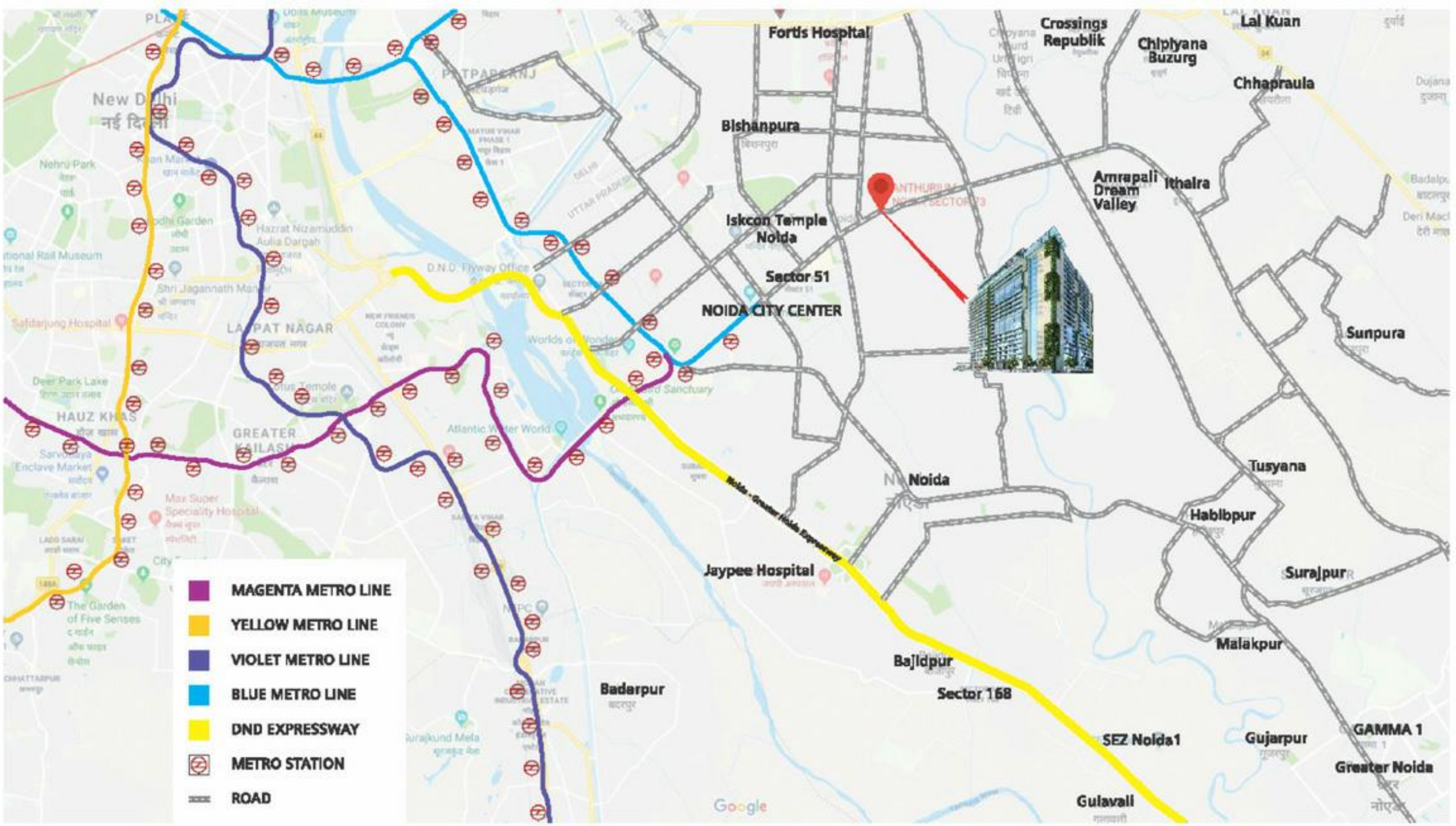
Call Us For Best Rate: 8748 90 91 92

ANTHURIUM

Connectivity and opportunity



Call Us For Best Rate: 8748 90 91 92



Call Us For Best Rate: 8748 90 91 92



EXPERIENCE A
NEW APEX

Call Us For Best Rate: 8748 90 91 92

PROMOTERS AND DEVELOPERS



The group partners with the crème-de-la-crème of architects, engineers, consultants and designers who work in tandem with qualified and experienced in house teams for project execution, management and marketing.

- Developer
M/s Aircon Systems India Pvt. Ltd.
- Project Consultants
M/s Holistics Urban Innovations Pvt. Ltd.
- Constructed By
M/s Canon Sundream Infra Pvt. Ltd.
- Group of Companies
M/s Alfheim India Pvt. Ltd.
- M/s Balaji Solutions
- M/s Canon Fasteners



Call Us For Best Rate: 8748 90 91 92



CREDITS

DEVELOPER

AIRCON
SYSTEMS INDIA PVT. LTD.



PROJECT CONSULTANTS
HOLISTICS URBAN INNOVATIONS PVT. LTD.



CANON
Safety You Can Trust

CONSTRUCTION BY
CANON SUNDREAM INFRA PVT. LTD.

Disclaimer: The pictures and details are tentative depictions only. This is not legal offer. Mentioned features and amenities are indicative and are subject to change without any prior notice as may be decided by the company or competent authority. *Terms & Conditions apply. 1 sq. mtr. - 10.764 sq. ft. & sq. yd. - 084 sq. mtr.

Marketed By



WE BUILD GROWTH

Inn 10

Infra Projects

Call Us For Best Rate: 8748 90 91 92