



THE FIRST COMMERCIAL
LANDMARK AT NOIDA EXPRESSWAY

CALL US FOR BOOKING: 8700 190 507

UPRERAPRJ504752
www.up-rera.in

EVERY NEW DAY IS A NEW DAWN OF EXPERIENCES HERE.

An unparalleled experience offering a great mix of food, shopping, entertainment, and office spaces.



SHOP

Explore The Best Retail Brands



WORK

Outperform at a High-end Workspace



DINE

Dig Into Sumptuous World Cuisine



ENTERTAIN

Enjoy Chartbuster Movies

WHY GULSHAN ONE29?

With distinctive and dedicated precincts for fun, food, fashion, and work, Gulshan One29 is truly not just a destination but an experience of a lifetime.

- Only Multiplex & Organized Retail Complex along the entire Noida Expressway.
- Festivity Plaza to Hang Out and Chill.
- Easy Road and Metro connectivity.
- Close to the upcoming Noida International Greenfield Airport & Film City.
- Maintenance & Lease Control for Sustainability.
- A Lucrative Business Destination.
- In close vicinity of many Fortune 500 Companies like KPMG, Dell, Accenture, Sapient, Adobe etc.
- 1.35 Lakh (Approx.) Working People in Nearby Commercial/Offices/Tech Zones.
- 2.5 Lakh (Approx.) Residents In High Rise & Plotted Apartments/Homes within the Primary Catchment Area of 5 KM.

AREA SPECIFICATION

GROSS SITE AREA
40771.43 Sq. Mt.

RETAIL ZONE

114335 Sq. Ft.

Stores & Brand Outlets

FOOD ZONE

87830 Sq. Ft.

Fine Dining
& Food Court

ENTERTAINMENT ZONE

42057 Sq. Ft.

FEC- Family
Entertainment Center
Multiplex (INOX)

WORK ZONE

194638 Sq. Ft.

Office Space

WITHIN 5 KM PRIMARY CATCHMENT AREA



APPROX.
2.5 LAKH RESIDENTIAL POPULATION



APPROX.
1.35 LAKH WORKFORCE



COMMERCIAL & WORKPLACES



HCL CAMPUS



SECTOR 127 WORKPLACES:
LOGIX TECHNOPARK
3C'S TECH BOULEWARD
SAMSUNG & ETC



ADOBE



EXPRESS TRADE TOWER II



ADVANT NAVIS BUSINESS PARK



OXYGEN IT



LOGIX TECHNOPARK



SIFY



ASSOTECH BUSINESS
CRESTERRA



CANDOR



RESIDENTIAL



PRATEEK EDIFICE



ATS ONE HAMLET



OMAXE FOREST SPA



GULSHAN VIVANTE



GULSHAN IKEBANA



ELDECO UTOPIA



PARAMOUNT FLORAVILLE



SIKKA KARNAM GREENS



THE ORCHARDS



PARAS TIERA



EDUCATIONAL



AMITY UNIVERSITY



GENESIS



DPS



PATHWAY



SHARDA UNIVERSITY

CATCHMENT AREA RESIDENTS

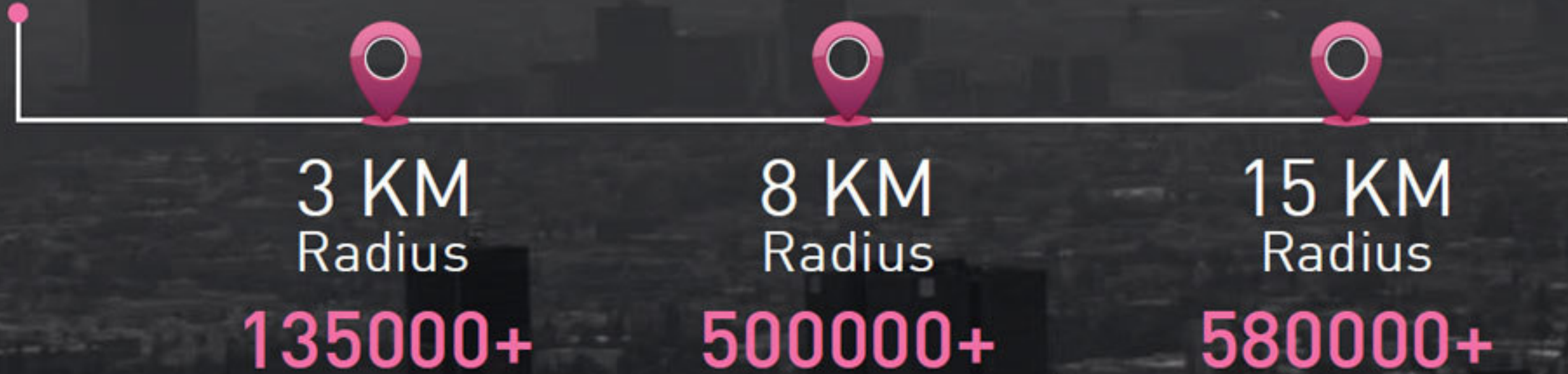


RESIDENTS

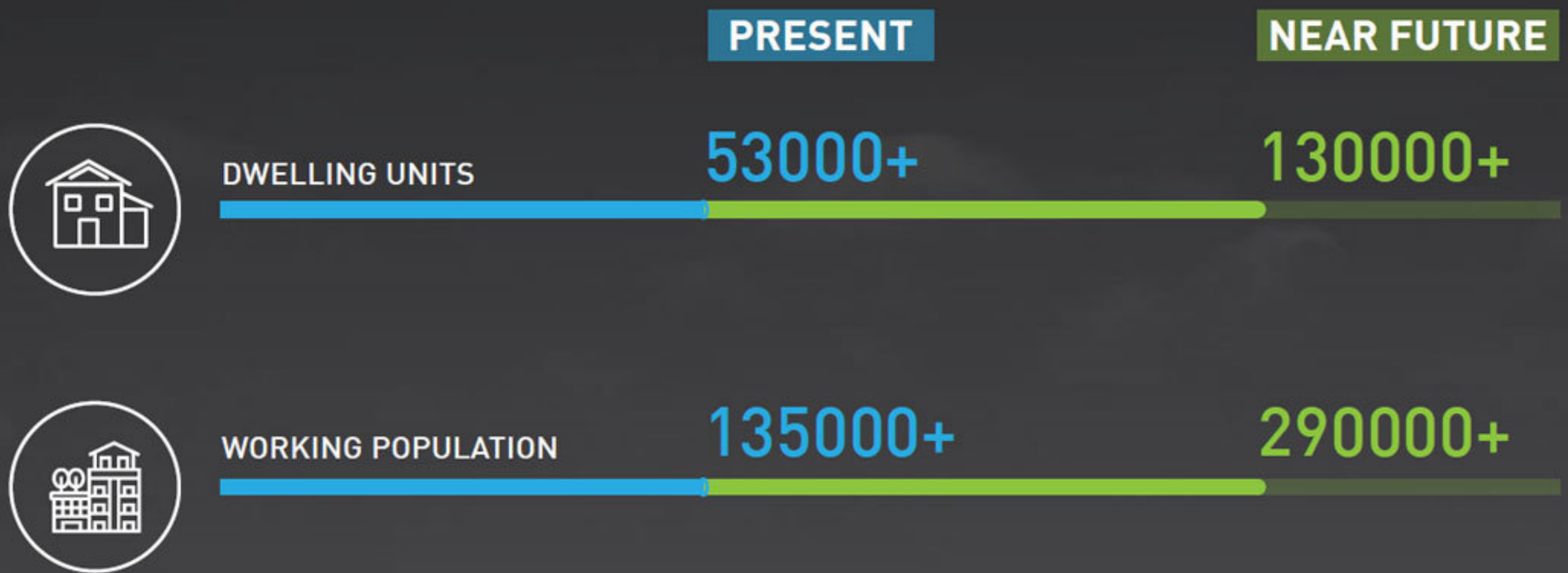
PRESENT



NEAR FUTURE



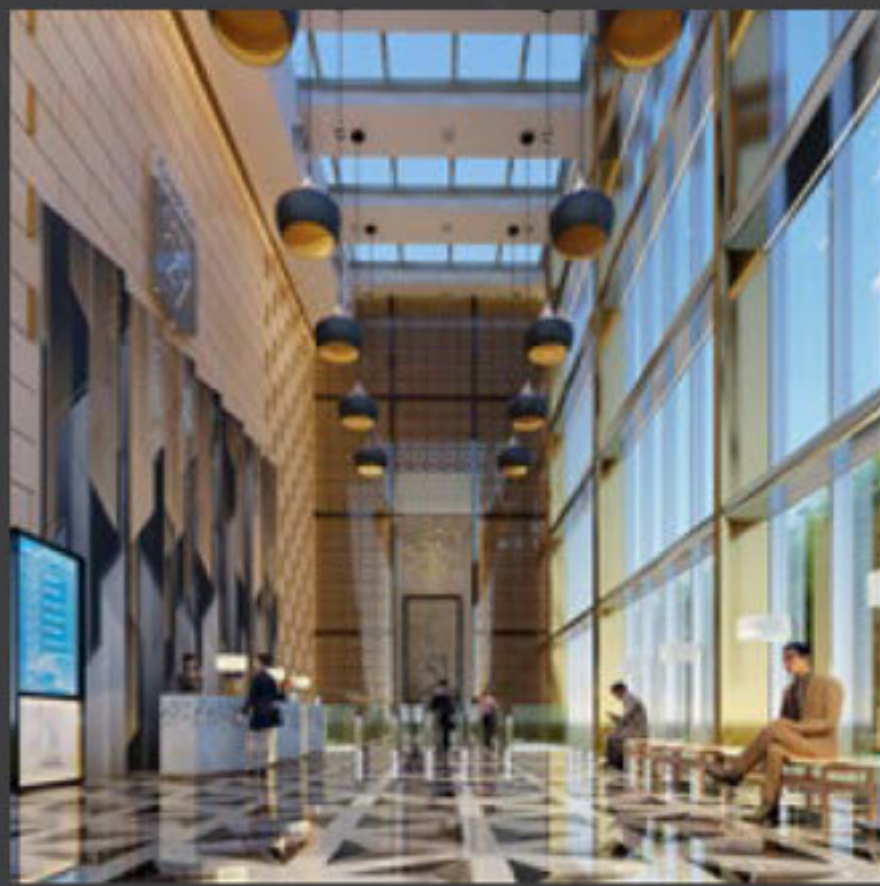
CATCHMENT AREA HOUSEHOLD AND OFFICE HEADCOUNT



Area Markup - 8 KM Radius

Gulshan

ONE
29



Features

Gulshan

ONE
29



AMPHITHEATRE

A sprawling amphitheater of approximately 17000 Sq. Ft., where you can unwind & enjoy the green and lively ambience.

- Open Air Theatre & Natural Trees
- Kiosks & Green Walls
- F&B Outlets
- Naturally Cooled Plaza

Gulshan

ONE
29

LANDSCAPE

- Free From Vehicular Movement.
- Beautiful Landscape with Ample Greenery.
- Enhanced Wind Flow through Architectural Blocking.
- Shading through Architectural Massing, Greenery & Misting Ambience.

Gulshan

ONE
29

RETAIL & FASHION

The double entry premises open up to Expressway and a nearby residential project; Gulshan One29 houses numerous renowned brands to pamper one's Daily Life & Lifestyle Needs.

Stock images for representation purpose only.

Gulshan

ONE
29

new/isty

ENHANCED VISIBILITY OF STORES

Built to mesmerize you with immaculately designed and smartly planned architecture, at Gulshan One29 the retail stores offer high visibility; thereby not just grabbing attention of the crowd but also aiding in maximizing the flow of potential customers.

Gulshan

ONE
29

CULINARY EXPERIENCE

To tantalize taste buds with the finest dishes & cuisines, Gulshan One29 encompasses Food Court, Sky Bar, & Cafes. It's the perfect place to enjoy quality time with loved ones over great food or even organize corporate events and meetings.

Stock images for representation purpose only.

Gulshan

ONE
29

ATRIUM

Wide Atrium to take care of any pedestrian movement and shopping activities.

Gulshan

ONE
29



EASE OF PARKING

Best-In-Class APP-Based Parking Management System.

FLOOR WISE DETAILS



14th and 15th Floor:
Sky Lounge/Restaurants



7th to 13th Floor:
Offices (Dedicated 7 Levels)



5th and 6th Floor:
Cinema



4th Floor:
Cinema Entry Foyer And Concession, Restaurants



3rd Floor:
Food Court, Gaming



2nd Floor:
Retail



Ground Floor & 1st Floor:
Retail Space



2 Basements:
For Parking and Services



SHOP



**Who needs to visit Paris if world's
latest fashion from global brands is
within your reach.**

Gulshan

ONE
29

SHOP

From A World Of Exquisite Fashion.

Hop from one to the next in our exclusive shopping playground. Dedicated for Vanilla Retail Brands on GF, FF and SF. Maximum Shop Frontage, Continuous Retail Facade & Adequate Space for Signages.

DINE



**Who needs to travel to France if world's best
gourmet experience is available within a few
minutes' drive.**

Gulshan

ONE
29

DINE

At places that offer experiences as diverse as your cravings.

Come hungry and leave happy from one of our delicious Restaurants in Food-court, Skybar & Café's, open for mid-day lunches, after-work happy hours, date-night dining and weekend brunches.

Gulshan

ONE
29

SKY LOUNGE

Dedicated area for a delectable meal.

A view to enchant you and a vibe to make good times come alive; our Sky Lounge is a perfect excuse to escape from the mundane and enjoy moments of joy and leisure in the hustle and bustle of city life.

ENTERTAIN



**A 6 Screen Multiplex to watch World
Cinema is as good as being at any
international film festival.**

Gulshan

ONE
29

ENTERTAIN

With movies that will double up your adrenaline.

The perfect hangout spot for the entertainment buffs. A 6 Screen, 1175-Seater Multiplex space signed with INOX. Fully-facilitated and designed for comfort, an ultimate entertainment experience that will keep you coming back.



WORK



Go Global in your own city with a
grand work place to elevate your
great business ideas.

Gulshan

ONE
29

WORK

Where Ambitions Meet New Heights.

- Grand Entrance to an A-grade Office Space.
- Dedicated Office Drop-Off.
- 50 Ft. High Grand Entry Lounge.
- Smart Conference Rooms.

Gulshan

Experience Excellence

In today's world, where brick and mortar seem to be the norm, Gulshan for more than past 3 decades has been seeing beyond this and believes in being a part of your life. Everything we do is to give you an experience that's nothing short of excellence.

We as an organization have always been well ahead of others in terms of quality and design. We have garnered a notable reputation of timely delivery of world-class as well as price-wise projects. Carving out a niche for ourselves, we today, proudly stand as an epitome of excellent experiences.

We are now also moving towards new realms of success with a commercial project for the first time and that's why we are leaving no stone unturned to make it a state-of-the-art project to live up to our reputation and help our patrons Experience Excellence.



UPRERAPRJ504752
www.up-rera.in

CALL US FOR BOOKING: 8700 190 507

Disclaimer:

This contains artistic impressions & no warranty is expressly or impliedly given that the completed development will comply in any degree with such artist's impression as depicted. The furniture, accessories, paintings, items, electronic goods, fittings/fixtures, decorative items, false ceiling including finished materials etc. shown in the presentation are only indicative in nature and are for the purpose of illustration. All specifications of the units shall be as per the final agreement between the parties. The official website of the company is www.gulshanhomz.com. Please do not rely on any other information shown on any other website.